



# High Wycombe Parking and CPZ review

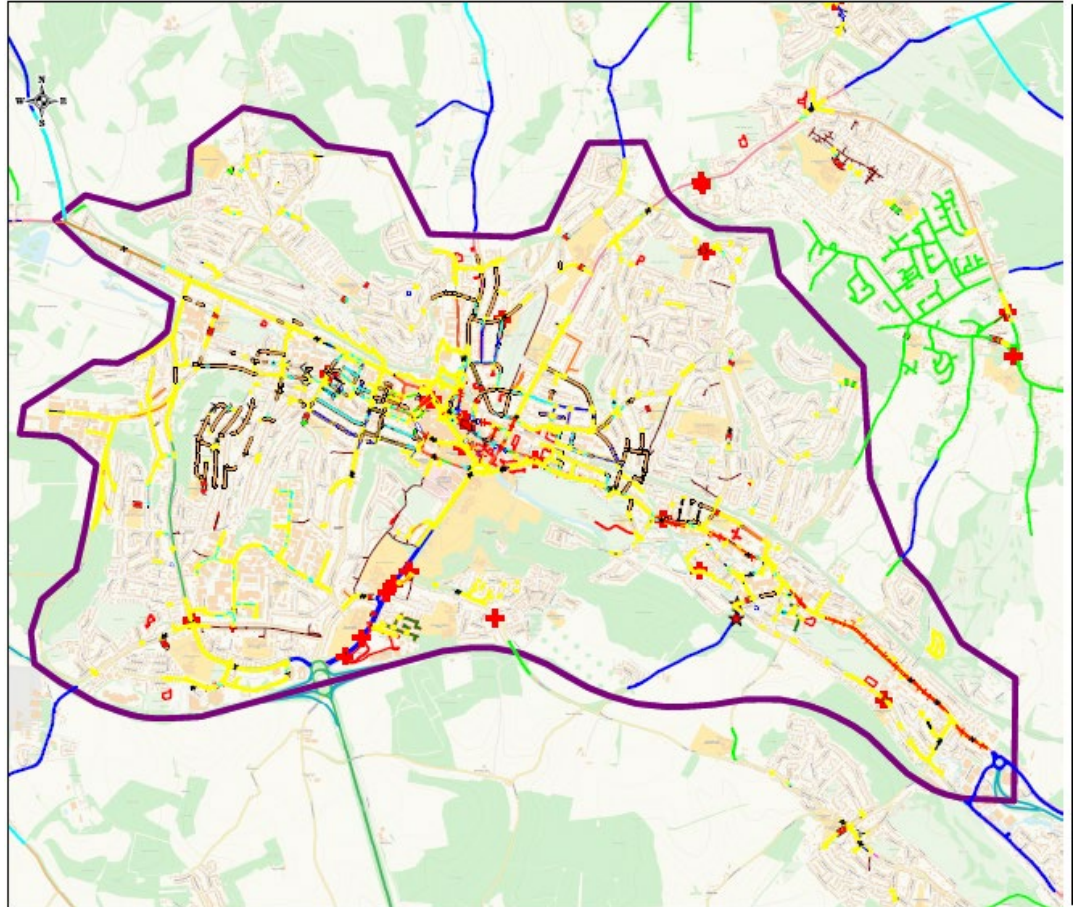
Initial Project Meeting



# Background

- The Council's parking team and Councillors have received numerous complaints from residents and businesses in the High Wycombe area who have advised of difficulty with parking in their roads and areas.
- These areas vary from roads within existing Controlled Parking Zones (CPZs) and roads outside of CPZs.
- In order to alleviate displacement of these parking issues, a decision was taken to undertake a town wide review.
- To ensure the needs of the various wards are included the aim is to set up a project board to discuss the full scope of scheme.

# Study Area



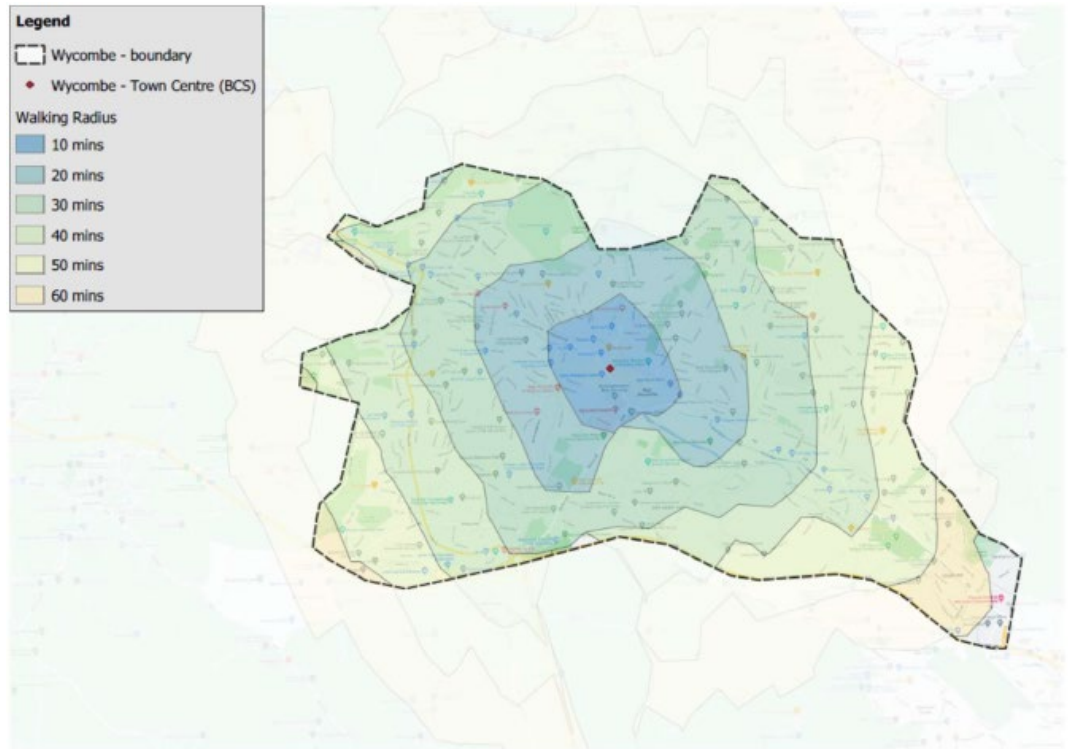
# Methodology

- Inception meeting will be held with the project board to ensure the requirements of the brief are fully understood and any requirements are captured.
- Risks will be identified and eliminated where possible or mitigated.
- Other priorities will be considered as part of the process which include:
  - Air quality
  - Commuter parking issues
  - Event parking (Adams Park Stadium)
  - Funding
  - Emerging Local Transport Plan 5 and wider Parking policy reviews

# Methodology

- Set out proposed boundaries which will contain the areas / roads which will be reviewed or assessed as part each stage of the programme.
  - These boundaries will be based on proximity to the town centre area and potential displacement locations.
- Agree priorities within areas.
- Set out project deliverables:
  - A project programme including timescales.
  - Proposed boundaries for areas to be reviewed at various stages of the programme.
  - Equalities impact assessment for the proposed areas.

# Example Walking Radius from Town Centre



# Methodology

- Undertake a parking stress survey
  - This will take into account Highway Code rules on where vehicles should not stop or park.
  - Detail out the number of hypothetical parking spaces are available.
  - Be undertaken at various times and days during the week.
  - Areas around Adams Park will have additional visits to clarify usage on event days.
- Review existing signage for compliance within existing CPZs.

# Programme

- **Contractors draft programme outline has been provided below.**

	Month 1	Month 2	Month 3	Month 4	Month 5	Month 6
<b>Project Commissioned</b>						
<b>Inception meeting</b>						
<b>Programme outline and create proposed boundaries</b>						
<b>Equality Impact Assessment</b>						
<b>Stress surveys</b>						
<b>Analysis</b>						
<b>Submit Parking demand report</b>						
<b>Designs (<i>including sign and line schedules and estimate of qualities</i>) for first phase</b>						

Once the final options for consideration are agreed by the project board, progression to implementation is via the Council's decision making process, alongside the legislative requirements to amend the Traffic Regulation Order; this includes statutory consultation



# Thank You